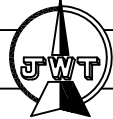
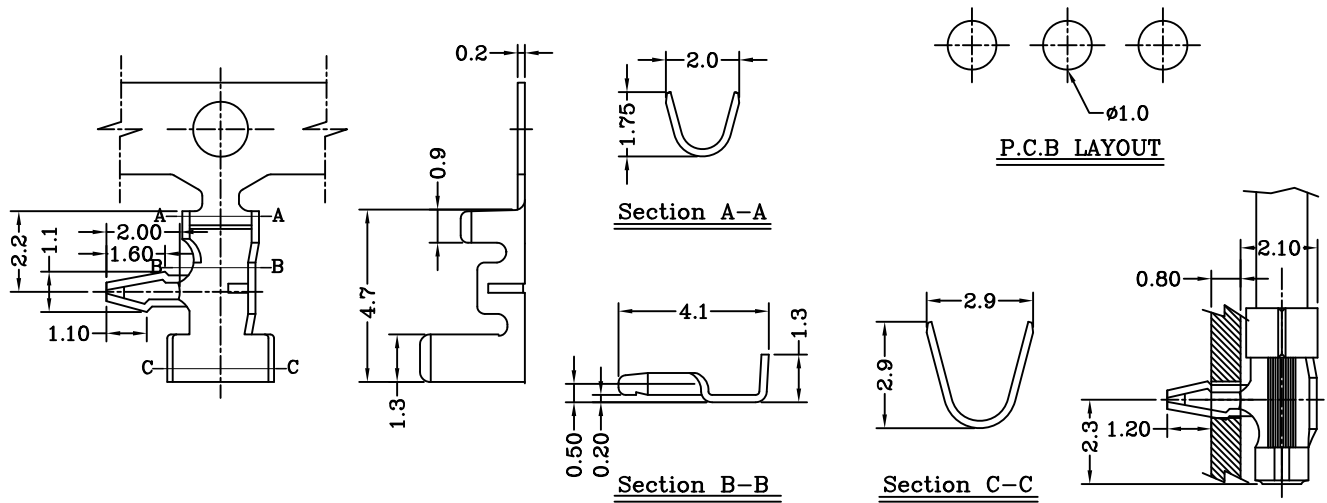


B1012 Series $\phi 1.00\text{mm}$ Board-in terminal



* Applicable PCB Thickness: 0.80mm



Specifications & Ordering Information:

Part No	Wire Range	Insulation O.D.	Material	Finish	Qty/Reel	NOTE
B1012TRP-2e	AWG #20	1.80mm(max)	Phosphor bronze	Tin-plated	8,000 PCS	e:Stamping before tin plating
B1012TRB-2e	AWG #20	1.80mm(max)	Brass	Tin-plated	8,000 PCS	