

Connector Product Number

B1501 <u>**</u> <u>#</u> - <u>NP</u> <u>*-*</u>					
①	②	③	④	⑤	⑥
① Series No : B1501	② Connection Type H0 : Straight-angle socket HR : Right-angle socket	③ Flame Class 0 : Nylon 66 UL 94V-0 Nylon 6T UL 94V-0	④ No. of contacts (NP) NP : Single row	⑤ Product color (Blank) : As specified (A~Z) : Other colors	⑥ Insulating material 6T : Nylon 6T UL 94V-0 ⑥ HF : Halogen-free products

Specifications:

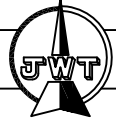
Poles	2~15 Poles
Pitch between poles	1.50mm
Rated Voltage	50V AC,DC
Rated Current	1A (AWG #26)
Withstand Voltage	500V AC/minute
Insulation Resistance	500MΩ (MIN.)
Temperature Range	-25~+85°C
Applicable Wire Range	AWG #26~#30



RoHS II-specification and Halogen-free products.

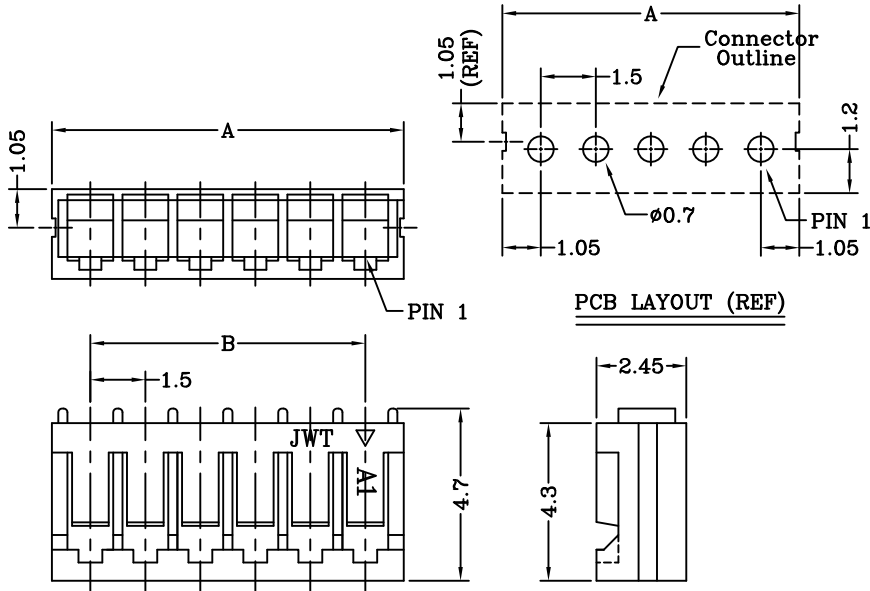
Note: Not applicable to all parts. For specific safety and compliance issues, contact JWT for details.

B1501 Series 1.50mm pitch board-in terminal socket



Features:

- * Straight Vertical Entry Type Terminal Socket
- * Material : Nylon 66 UL 94V-0 (White)
- * Suitable for JWT B1501T0*-** series terminal
- * JWT P/N : B1501H00-NP-66



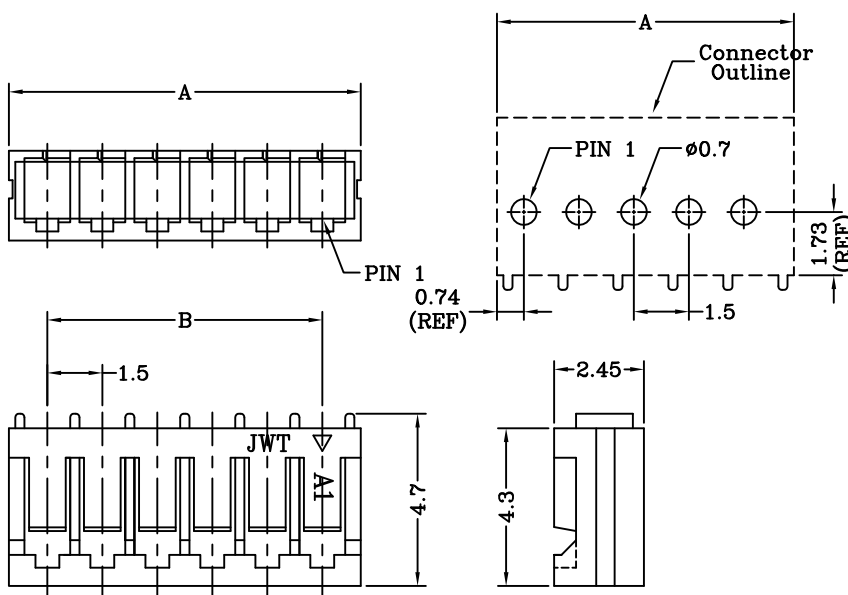
Dimensional Information:

Circuits	Dimensions		Pcs/Bag
	A	B	
2	3.6	1.5	1000
3	5.1	3.0	1000
4	6.6	4.5	1000
5	8.1	6.0	1000
6	9.6	7.5	1000
7	11.1	9.0	1000
8	12.6	10.5	1000
9	14.1	12.0	1000
10	15.6	13.5	1000
11	17.1	15.0	1000
12	18.6	16.5	1000
13	20.1	18.0	1000
14	21.6	19.5	1000
15	23.1	21.0	1000

B1501 Series 1.50mm pitch board-in terminal socket

Features:

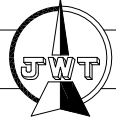
- * Right-angle Horizontal Entry Type Terminal Socket
- * Material : Nylon 66 UL 94V-0 (White)
- * Suitable for JWT B1501TR*-** series terminal
- * JWT P/N : B1501HR0-NP-66



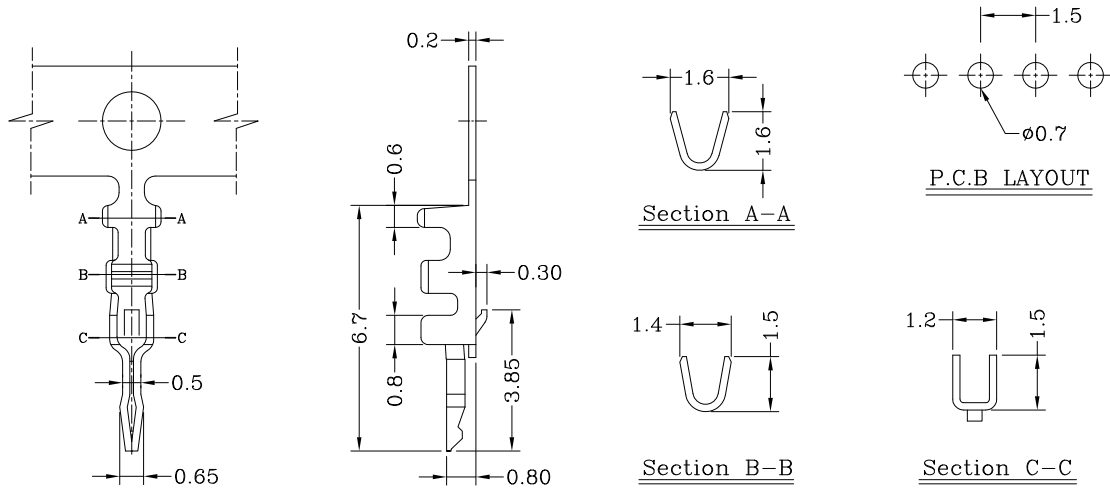
Dimensional Information:

Circuits	Dimensions		Pcs/Bag
	A	B	
2	3.6	1.5	1000
3	5.1	3.0	1000
4	6.6	4.5	1000
5	8.1	6.0	1000
6	9.6	7.5	1000
7	11.1	9.0	1000
8	12.6	10.5	1000
9	14.1	12.0	1000
10	15.6	13.5	1000
11	17.1	15.0	1000
12	18.6	16.5	1000
13	20.1	18.0	1000
14	21.6	19.5	1000
15	23.1	21.0	1000

B1501 Series 1.50mm pitch crimp terminal (V-Type)



- * Applicable PCB Thickness: 0.80~1.60mm
- * Used in JWT B1501H00-NP-66 socket

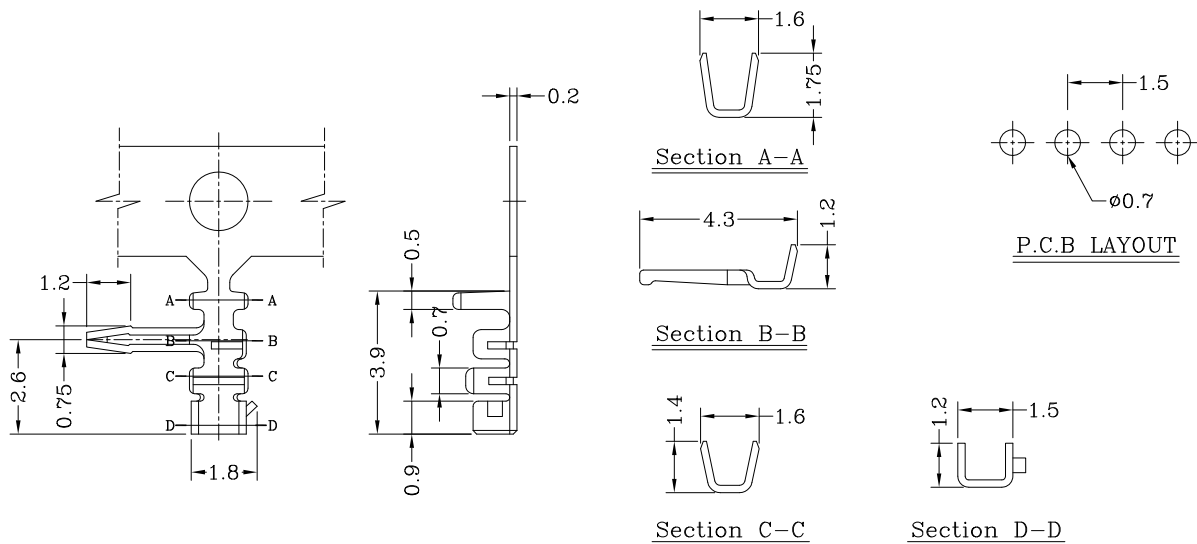


Specifications & Ordering Information:

Part No	Wire Range	Insulation O.D.	Material	Finish	Qty/Reel
B1501T0B-2e	AWG #26~#30	1.00mm(max)	Brass	Post-Tin plated	10,000 PCS
B1501T0B-5e	AWG #26~#30	1.00mm(max)	Brass	Matte-Tin plated	10,000 PCS

B1501 Series 1.50mm pitch crimp terminal (R-Type)

- * Applicable PCB Thickness: 0.80~1.60mm
- * Used in JWT B1501HR0-NP-66 socket



Specifications & Ordering Information:

Part No	Wire Range	Insulation O.D.	Material	Finish	Qty/Reel
B1501TRB-2e	AWG #26~#30	1.00mm(max)	Brass	Post-Tin plated	10,000 PCS
B1501TRB-5e	AWG #26~#30	1.00mm(max)	Brass	Matte-Tin plated	10,000 PCS