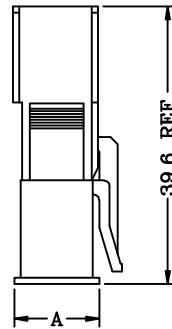





### Assembly Layout



Circuits	Dimensions	
	A	
1x2	10.4	
1x3	10.4	
1x4	10.4	
2x2	15.2	
2x3	14.9	
3x3	19.4	
3x4	19.4	
3x5	19.4	

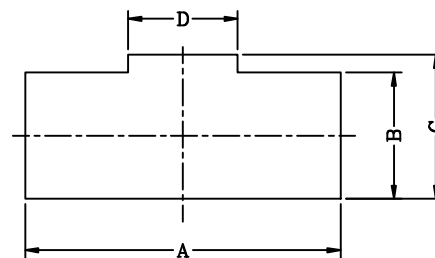
 UL Recognized No. E144544

 CSA: Certified No. LR78619

 RoHS II-specification and Halogen-free products.

Note: Not applicable to all parts. For specific safety and compliance issues, contact JWT for details.

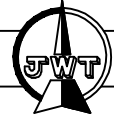
### Panel Hole Layout



Circuits	Part No	Panel Layout (Dimension)			
		A	B	C	D
1X2	C1301H02-1x2P	15.0	6.0	6.85	5.2
1X3	C1301H02-1x3P	19.7	6.0	6.85	5.2
1X4	C1301H02-1x4P	24.2	6.0	6.85	5.2
2X2	C1301H02-2x2P	15.6	10.6	11.60	5.2
2X3	C1301H02-2x3P	19.7	10.2	11.10	5.2
3X3	C1301H02-3x3P	19.7	14.8	15.70	5.2
3X4	C1301H02-3x4P	24.2	14.8	15.70	5.2
3X5	C1301H02-3x5P	28.7	14.8	15.70	5.2

### Specifications:

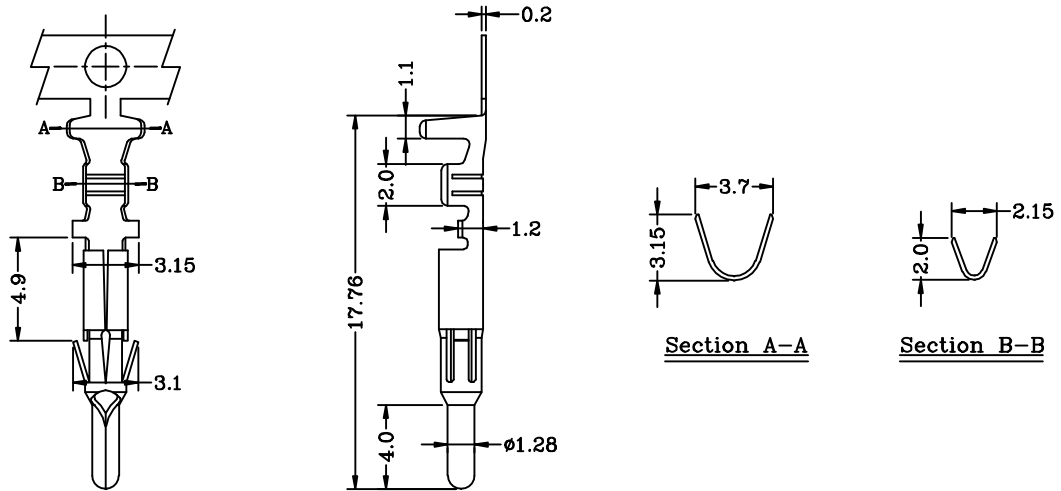
Poles	2~15 Poles
Plug Diameter	$\phi$ 1.28mm
Rated Voltage	300V AC,DC
Rated Current	2A~5A
Withstand Voltage	1500V AC/minute
Contact Resistance	10m $\Omega$ (MAX.)
Insulation Resistance	1,000M $\Omega$ (MIN.)
Temperature Range	-25 $^{\circ}$ ~+90 $^{\circ}$ C
Applicable Panel Thickness	0.8~2.0mm
Applicable Wire Range	AWG #20~#26



# C1301 Series $\phi 1.28\text{mm}$ plug crimp terminal

Features:

\* Used in JWT C1301 series socket



Specifications & Ordering Information:

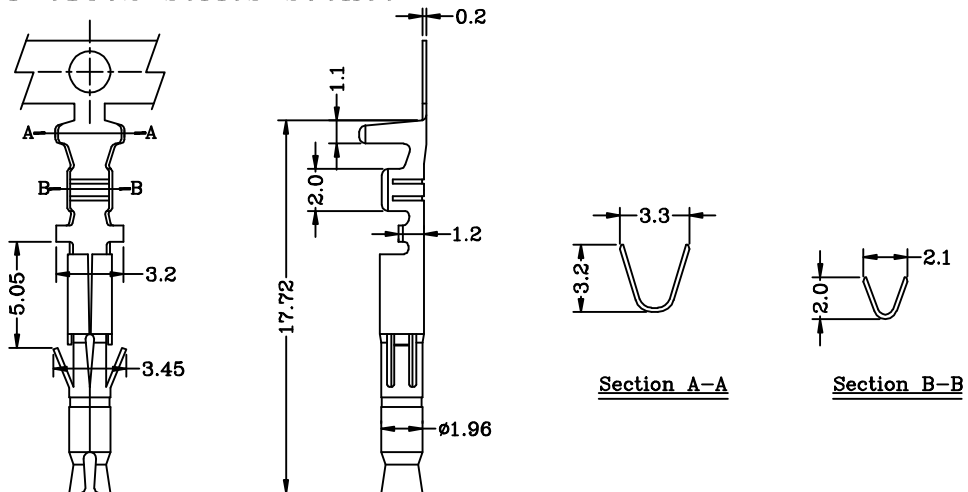
Part No	Wire Range	Insulation O.D.	Material	Finish	Qty/Reel
C1301T0B-2	AWG #20~#26	2.70mm(max)	Brass	Tin-plated	7,000 PCS
C1301T0B-0*	AWG #20~#26	2.70mm(max)	Brass	Au over Nickel	7,000 PCS

Note: 0\* (eg. 00, 0A, 0B...) designates Au-plate thickness identification.  
For availability, delivery and MOQ, contact JWT.

# C1302 Series $\phi 1.28\text{mm}$ receptacle crimp terminal

Features:

\* Used in JWT C1302 series socket



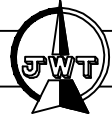
Specifications & Ordering Information:

Part No	Wire Range	Insulation O.D.	Material	Finish	Qty/Reel
C1302T0*-2	AWG #20~#26	2.70mm(max)	Brass or P. Bronze	Tin-plated	7000 PCS
C1302T0*-0*	AWG #20~#26	2.70mm(max)	Brass or P. Bronze	Au over Nickel	7000 PCS

Note: 0\* (eg. 00, 0A, 0B...) designates Au-plate thickness identification.  
For availability, delivery and MOQ, contact JWT.

# C1301/C1302 Series

Ø1.28mm plug and receptacle series terminal socket



## Features:

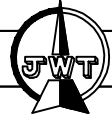
- \* Single, Dual, & Triple Row Terminal Socket
- \* Material : Nylon 66 UL 94V-0 (White)

## Specifications & Ordering Information:

C1301H02	Pcs/Bag	C1302H02	Pcs/Bag
<p><u>C1301H02-1x2P</u></p>	1000	<p><u>C1302H02-1x2P</u></p>	1000
<p><u>C1301H02-1x3P</u></p>	1000	<p><u>C1302H02-1x3P</u></p>	1000
<p><u>C1301H02-1x4P</u></p>	500	<p><u>C1302H02-1x4P</u></p>	500
<p><u>C1301H02-2x2P</u></p>	500	<p><u>C1302H02-2x2P</u></p>	500

# C1301/C1302 Series

Ø1.28mm plug and receptacle series terminal socket



## Features:

- \* Single, Dual, & Triple Row Terminal Socket
- \* Material : Nylon 66 UL 94V-0 (White)

## Specifications & Ordering Information:

C1301H02	Pcs/Bag	C1302H02	Pcs/Bag
<p><u>C1301H02-2x3P</u></p>	500	<p><u>C1302H02-2x3P</u></p>	500
<p><u>C1301H02-3x3P</u></p>	500	<p><u>C1302H02-3x3P</u></p>	500
<p><u>C1301H02-3x4P</u></p>	300	<p><u>C1302H02-3x4P</u></p>	300
<p><u>C1301H02-3x5P</u></p>	300	<p><u>C1302H02-3x5P</u></p>	300